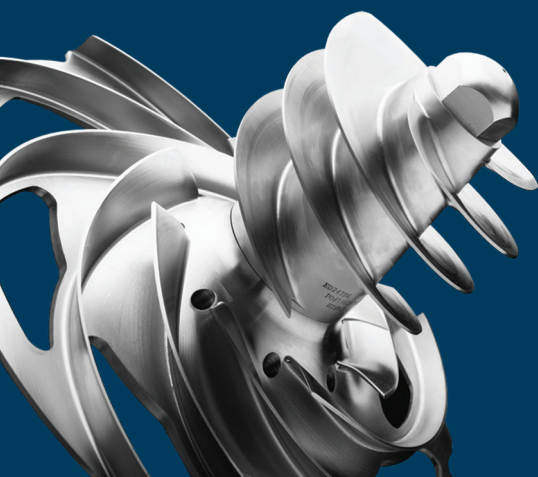




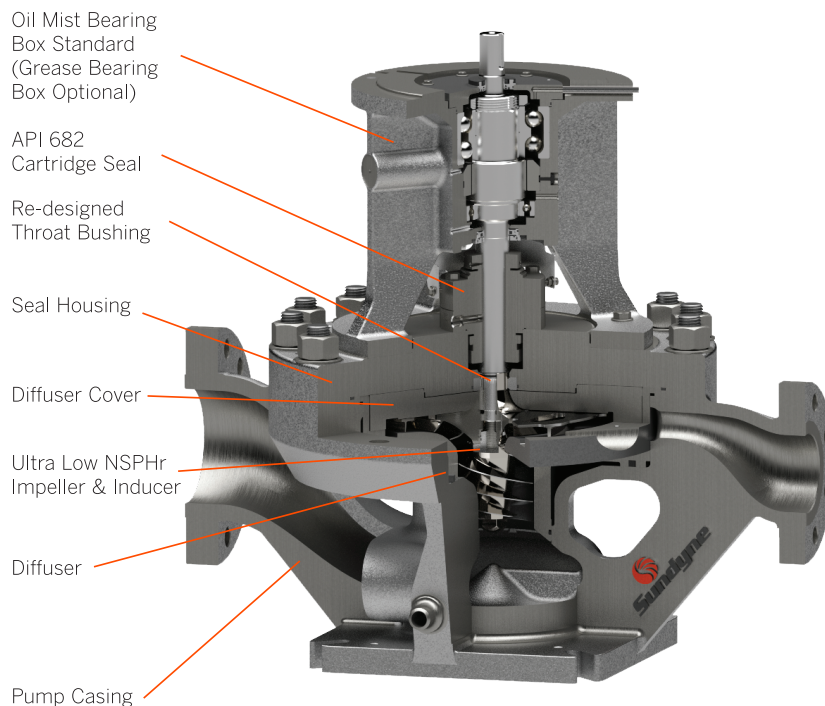
API 610 Type OH3 Direct-Drive Vertical Inline Centrifugal Pump

Ultra-low NPSHr <10 ft (3m) up-and-down the Curve
Without the Risk of Cavitation

The API 610 type OH3 LMV 803Lr is a direct-drive, heavy-duty, vertical inline centrifugal pump. It combines Sundyne's proven inducer technology and backswept impeller designs to reach unparalleled NPSHr <10ft (3m) up-and-down the curve.



Sundyne LMV 803Lr, API 610 OH3

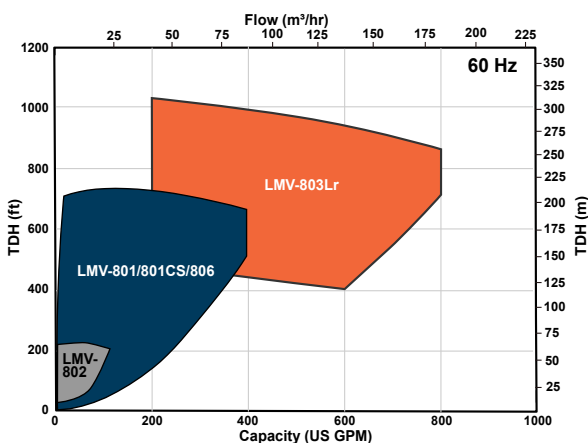


Recent upgrades, specifically designed for the Hydrocarbon Processing Industry include:

- Enhanced throat bushing improving seal performance in light hydrocarbon services
- An Oil Mist Bearing Box with robust loading capabilities and maximum motor options is standard. Grease Bearing Box is also available.
- Updated cryogenic design for NGL recovery, ethane, LNG production, and storage
- Expanded hydraulic range with ultra-low NPSHr meeting a wider range of process parameters while delivering ultra-low NPSHr up-and-down the curve

The LMV 803Lr is ideally suited for low NPSHr processes that require booster pumps, LNG applications or downstream refining applications. The LMV 803Lr is also perfect for "anes and enes" hydrocarbon applications.

LMV 803Lr

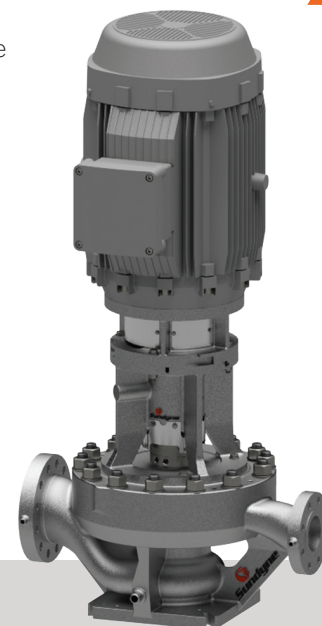


Minimal Installation & Maintenance Costs

Sundyne's most rugged LMV variant to date, the LMV 803Lr brings a compact footprint, uptime reliability and optimized efficiency to high flow, low NPSHa applications. The footprint of the LMV 803Lr is just 25-percent as large as competitive horizontal pumps.

Pump Runs at Grade Level

In many instances, a crane is not required to install and maintain the pump because the LMV 803Lr can be installed at grade level, eliminating the need for a sump pit or elevated tower skirt. The ability to attain NPSHr without lift vessels reduces installation costs by tens-of-thousands-of-dollars, while greatly minimizing and simplifying maintenance over the life of the pump.



Typical Applications

- Transfer
- Recycle
- Bottoms
- Pipeline boost
- Boiler Feed Water
- Condensate
- Fuel Feed
- Seal Water
- Inorganic Acids
- High Pressure Wash
- Cryogenic Services
- Offshore Platform Services
- Charge / Reactor Feed

60 Hz Specifications

| | |
|---|---|
| Heads to | 1080 ft |
| Flows to | 800 gpm |
| Standards | API 610 OH3, ISO 13079, ASME |
| Maximum Motor Power | 400 HP |
| Temperature Range | -200 to 400°F |
| Maximum Allowable Working Pressure | 1,000 psig |
| Maximum Suction Pressure | 400 psig |
| Maximum Viscosity | 750 cp |
| Solids Range | 0.015", 400 microns |
| Mounting Configuration | Vertical |
| Seal Configurations | Single, Double, Tandem, API 682 Cartridge |
| Available Inducer | Standard |
| Available Flanges | 6" 600# Inlet, 4" 600# Discharge |
| Suction and Discharge Size | 6" x 4" |
| API Plan | 11, 13, 14, 31, 52, 53, 54 |
| Number of Stages | 1 |
| Speed Range | 1780 rpm/3550 rpm/<3900rpm (VSD) |
| Materials of Construction | Stainless Steel |
| Bearing Type | Ball Bearings |
| Hydrotest Pressure | 1,500 psig |
| Pump Case Corrosion Allowance | 0.125" |



Questions?
Call us today at
1-866-Sundyne

For more information fill out our convenient [Contact Me](#) form and a Sundyne representative will contact you.



Sundyne Headquarters:
Sundyne, LLC
14845 West 64th Avenue
Arvada, Colorado 80007 USA

1-866-Sundyne
Phone: 1 303 425 0800
Fax: 1 303 425 0896
www.sundyne.com

Dijon, France
Eastbourne East Sussex, UK
Madrid/Toledo, Spain
Tokyo, Japan